



2010-2011 GMT Reports for District (or Undistricted) **District 17 O**

GMT: **Jeff Kriz**

Location: **KANSAS**

GMT CA: **1**

CLUBS

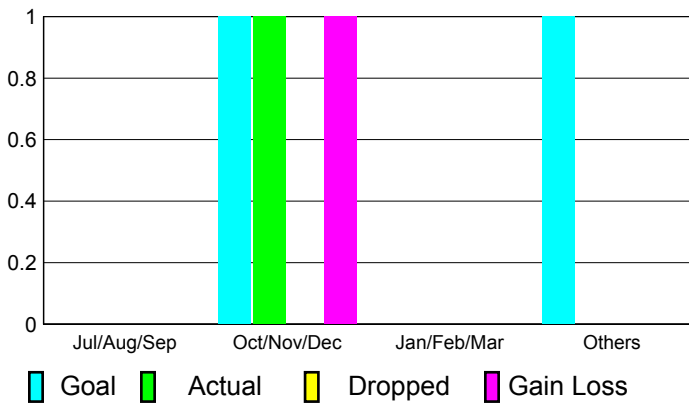
Club Results 2010-2011

Clubs 2009-2010

| Month | New Club Goal | Actual New Clubs | Actual Dropped Clubs | Gain/Loss of Clubs | Gain/Loss of Clubs |
|---------------|---------------|------------------|----------------------|--------------------|--------------------|
| Jul/Aug/Sep | 0 | 0 | 0 | 0 | 0 |
| Oct/Nov/Dec | 1 | 1 | 0 | 1 | 0 |
| Jan/Feb/Mar | 0 | 0 | 0 | 0 | 0 |
| Apr/May/June | 1 | 0 | 0 | 0 | 0 |
| Totals | 2 | 1 | 0 | 1 | 0 |

Club Results 2010-2011

Goal, New, Dropped, Gain/Loss



MEMBERSHIP

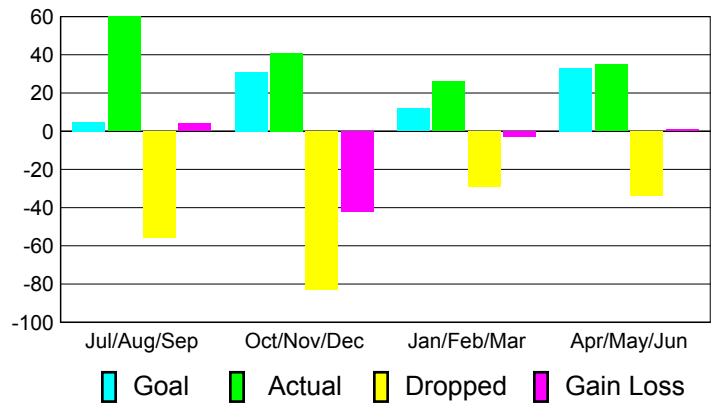
Membership Results 2010-2011

Membership 2009-2010

| Month | Net Memb Goal | Actual New Memb | Actual Dropped Memb | Gain/Loss of Memb | Gain/Loss of Memb |
|---------------|---------------|-----------------|---------------------|-------------------|-------------------|
| Jul/Aug/Sep | 5 | 60 | -56 | 4 | -4 |
| Oct/Nov/Dec | 31 | 41 | -83 | -42 | -5 |
| Jan/Feb/Mar | 12 | 26 | -29 | -3 | 10 |
| Apr/May/June | 33 | 35 | -34 | 1 | -12 |
| Totals | 81 | 162 | -202 | -40 | -11 |

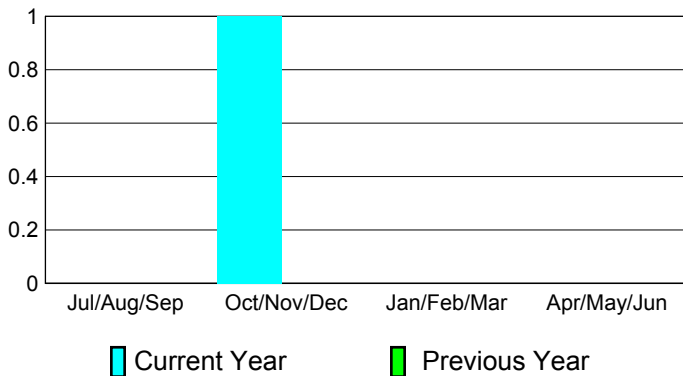
Membership Results 2010-2011

Goal, New, Dropped, Gain/Loss



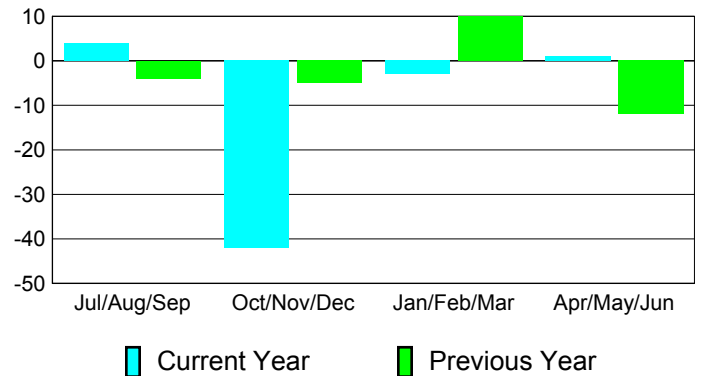
Comparison of Club Gain/Loss

Current Year Compared to the Previous Year



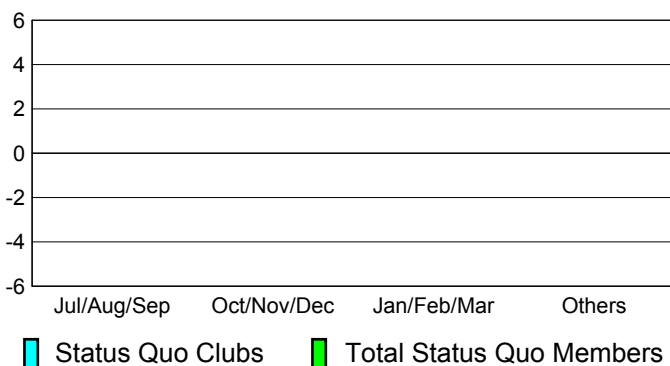
Comparison of Membership Gain/Loss

Current Year Compared to the Previous Year



YTD Status Quo Clubs 2010-2011

Status Quo Clubs Compared to Status Quo Members



Gender Comparison 2010-2011

